

Citral

Hindbærketon

Gingerol

Kanelaldehyd

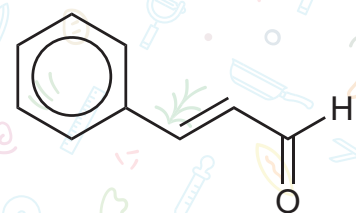
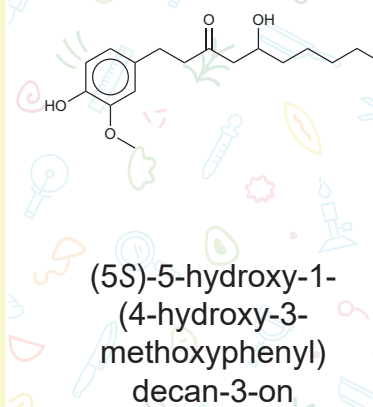
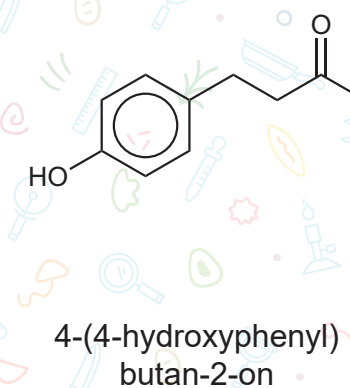
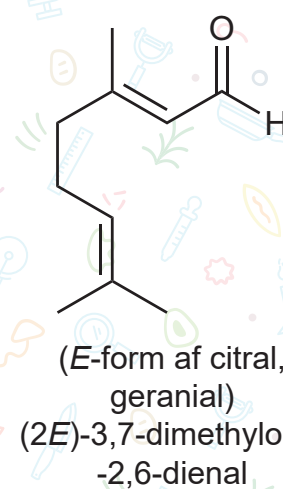
Anethol

Linalool

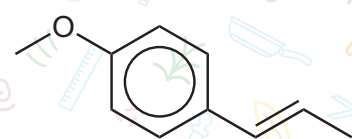
Benzaldehyd

Menthol

Vanillin



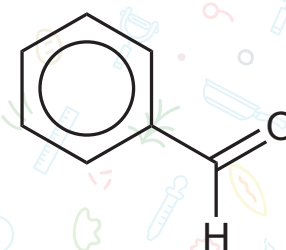
(*2E*)-3-phenylprop-
2-enal



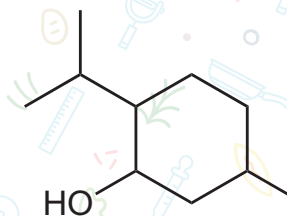
1-methoxy-4-[(*1E*)-
prop-1-en-1-yl]benzen



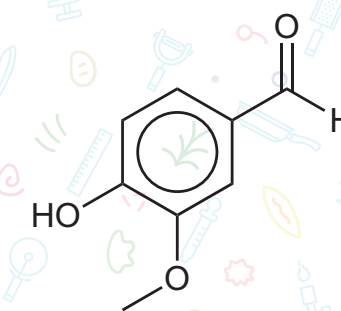
3,7-dimethylocta-1,6-
dien-3-ol



phenylmethanal

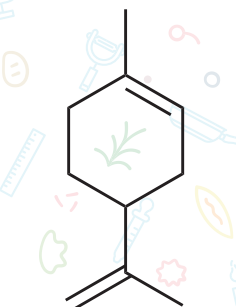


2-isopropyl-5-
methylcyclohexan-1-ol



4-hydroxy-3-
methoxybenzaldehyd

Limonen



1-methyl-4-
(prop-1-en-2-yl)
cyclohex-1-en

Lime

Limonen
&
Citral

Hindbær

Hindbærketon

Ingefær

Gingerol

Kanel

Kanelaldehyd

Lakrids

Anethol

Lavendel

Linalool
&
Linalylethanoat

Mandel

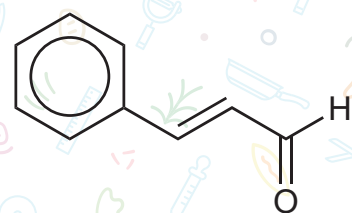
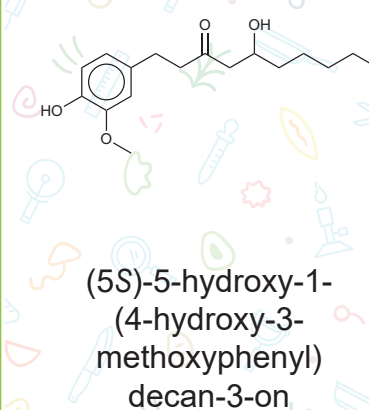
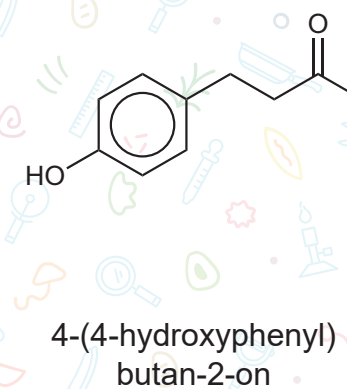
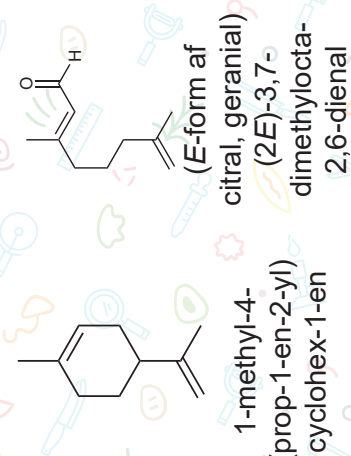
Benzaldehyd

Pebermynte

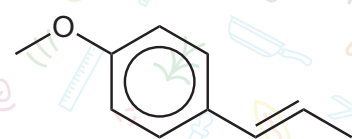
Menthol

Vanilje

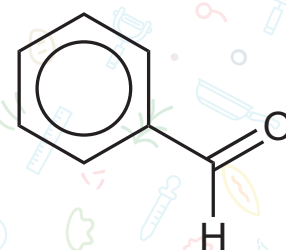
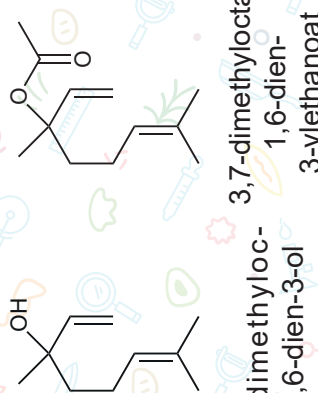
Vanillin



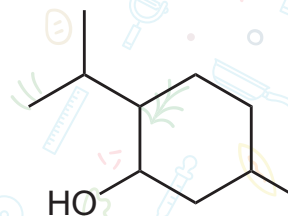
(2E)-3-phenylprop-
2-enal



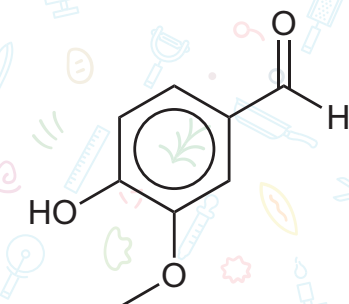
1-methoxy-4-[(1E)-
prop-1-en-1-yl]benzen



phenylmethanal



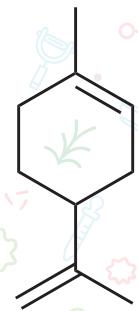
2-isopropyl-5-
methylcyclohexan-1-ol



4-hydroxy-3-
methoxybenzaldehyd

Appelsin

Limonen



1-methyl-4-
(prop-1-en-2-yl)
cyclohex-1-en

Lime

Limonen:
1-methyl-4-(prop-1-en-2-yl)cyclohex-1-en

Citral:
(E-form af citral, geranial)
(2E)-3,7-dimethylocta-2,6-dienal

Hindbær

Hindbærketon:
4-(4-hydroxyphenyl)butan-2-on

Ingefær

Gingerol:
(5S)-5-hydroxy-1-(4-hydroxy-3-methoxyphenyl)decan-3-on

Kanel

Kanelaldehyd:
(2E)-3-phenylprop-2-enal

Lakrids

Anethol:
1-methoxy-4-[(1E)-prop-1-en-1-yl]benzen

Lavendel

Linalool:
3,7-dimethylocta-1,6-dien-3-ol

Linalylethanoat:
3,7-dimethylocta-1,6-dien-3-ylethanoat

Mandel

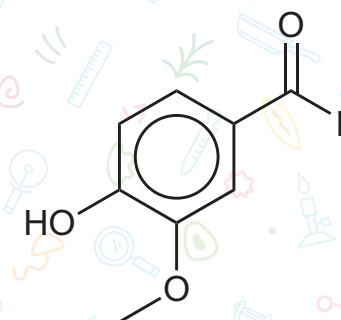
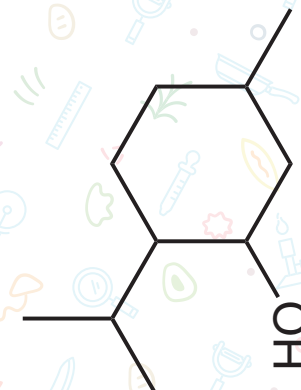
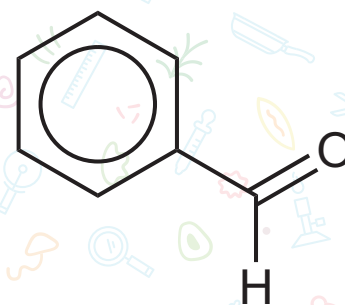
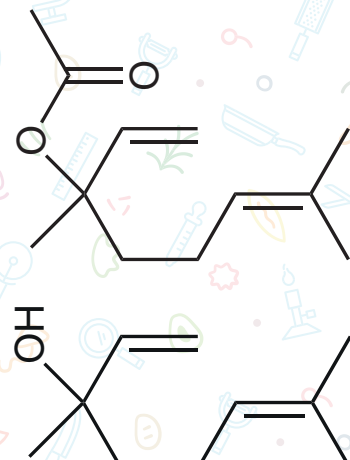
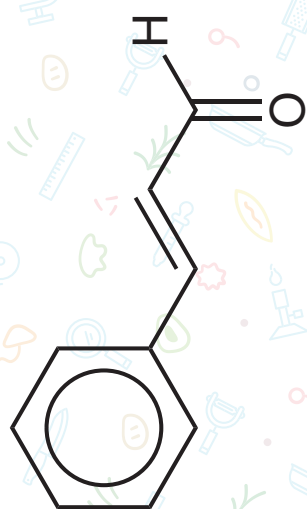
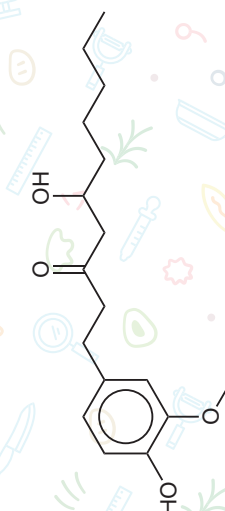
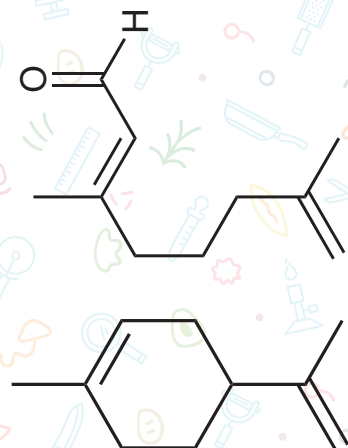
Benzaldehyd:
phenylmethanal

Pebermynte

Menthol:
2-isopropyl-5-methylcyclohexan-1-ol

Vanilje

Vanillin:
4-hydroxy-3-methoxybenzaldehyd



Appelsin

Limonen:
1-methyl-4-
(prop-1-en-2-yl)
cyclohex-1-en

Chili

Capsaicin:
(6E)-N-(4-hydroxy-3-
methoxybenzyl)-8-
methylnon-6-enamid

Banan

Isoamylethanoat:
3-methylbutylethanoat

Citron

Citronellal:
3,7-dimethyloct-6-enal

Humle (øl)

Humulen:
(1E,4E,8E)-2,6,6,9-
tetramethylcycloundeca-
1,4-8-trien

Timian

Thymol:
2-isopropyl-5-
methylphenol

Rabarber

cis-3-hexenal
(Z)-hex-3-enal

Oregano

Carvacrol:
5-isopropyl-2-
methylphenol

Estragon

Estragol:
1-methoxy-4-
(prop-2-en-yl)benzen

